



_THERMAL SPRAY

s-MET Sliding-contact Coatings

Purpose of Coatings

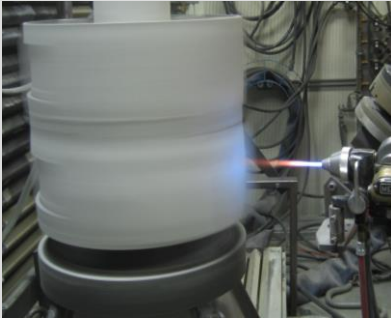
Protecting sliding surfaces from severe wear and ensure a good sliding behaviour

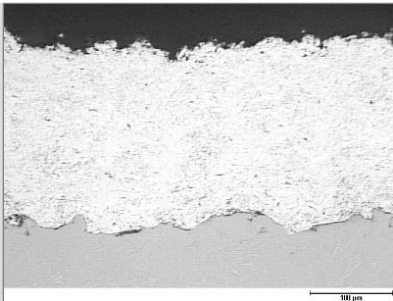
Applications

- Cylindrical and planar sliding contact parts and sealing faces in machines, constructions, equipment and vehicles
- Bearing shells, thrust rings, bearing bushes, sliding guides, multi-surface sliding bearings
- Synchronizer rings, bearings subjected to high stress
- Valves, e.g. sliding spool and segment plates valves

Features

- Technologies: Wire and powder flame spraying, arc spraying, plasma spraying, cold gas spraying, HVOF
- Coating materials: Sn, Al alloys, babbitt, bronze, brass, Mo, Co alloys (similar to triballoy, stellite)
- Base body materials: Steel, cast iron, Al, further metals and alloys
- Coating thickness: 0.05...> 5 mm





Benefits

- Sliding coatings of variable material compositions possible - e.g. mixtures of sliding metals, inclusions of hard particles and/or solid lubricants
- Sliding material can deposited straight on to machine parts e.g. connection rods, housings, drive shafts
- Cost-efficient application of sliding bearing material – especially for bigger surfaces and diameters, for piece production and higher quantities
- As sprayed surfaces can be machined with conventional cutting technique

Our Service Offering

- Coating of sample and prototype parts, including fixture construction
- Advisory service, design optimization, selection of coating material
- Development of specifications for serial technologies
- Serial production
- Pre-treatment, coating and post-treatment of parts (sealing, machining)
- Quality control, packaging according specifications



Who we are

With more than 100 years of experience, GfE is one of the world's leading manufacturers and suppliers of high-performance metals and materials. Based on our comprehensive materials science know-how, we develop high-quality tailor-made solutions for a wide range of industrial applications. We offer our customers fast service and qualified technical advice.



Certification in accordance with DIN EN ISO 9001, DIN EN ISO 14001, DIN EN ISO 50001, DIN ISO 45001 and DIN EN ISO/IEC 17025 support our claim to the highest quality and safety. We can thus guarantee products that meet the specific requirements of our customers. Your trust and satisfaction are the cornerstone of our business.

GfE is a subsidiary of AMG Advanced Metallurgical Group N.V., Netherlands, a global leader in the production of specialty metals and metallurgical vacuum furnace systems.

Technical Contact: Dr. Marcel Roth

Phone: +49 (0)37322 472-536

E-mail: marcel.roth@gfe.com

Commercial Contact: Steffen Schmidt

Phone: +49 (0)37322 472-505

E-mail: steffen.schmidt@gfe.com